



« Jean Nouvel project »

PRESS KIT

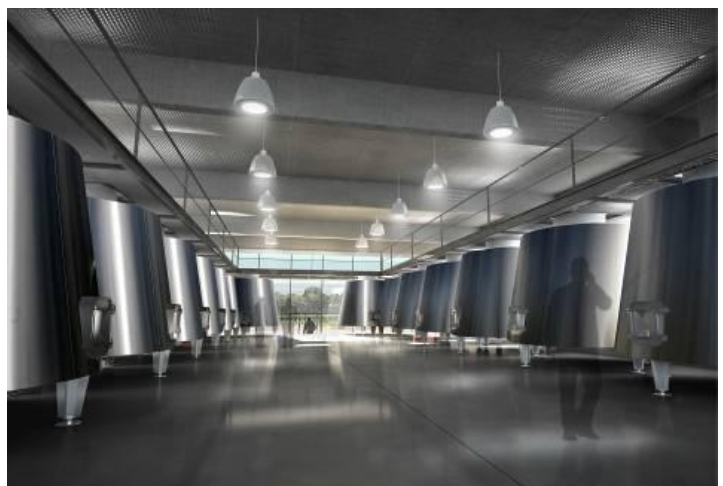
In 2012, Château La Dominique, Saint Emilion Grand Cru Classé, undertook significant construction and renovation work in order to equip itself with a high tech production facility worthy of this prestigious terroir. Complete with modern wine tourism facilities, the new Chai is a distinctive example of contemporary architecture designed by the famous architect Jean Nouvel.



Situated to the North-West of Saint Emilion, close to Château Cheval Blanc, Figeac, L'Évangile, la Conseillante and Pétrus, Château La Dominique is a 30 hectare estate known as one of Saint Emilion's best vineyard. This Grand Cru Classé, owned by Clément Fayat since 1969 has been completely overhauled and benefits from continual improvements. In addition to the great care taken over the vines, the team works meticulously on both vinification and the blending with expert advice given by Michel Rolland. From 2010, Yannick Evenou, director of the vineyards, initiated together with Jean Nouvel a project to develop a production facility of the highest standard.

A high tech wine making facility

- New 600m² building equipped with 22 additional fermenting vats (1800hl), providing a total capacity of 3600hl
- Insulated double skin stainless steel vats with thermo-regulation
- Gravity system process
- Cold room
- Ageing cellars with oak-barrels equipped with thermo-regulation under controlled humidity
- Double sorting (manual and optical)



In an environment especially designed for making exceptional wines, the newly installed technology guarantees a quality and a consistency which matches the Château's ambitious objectives.

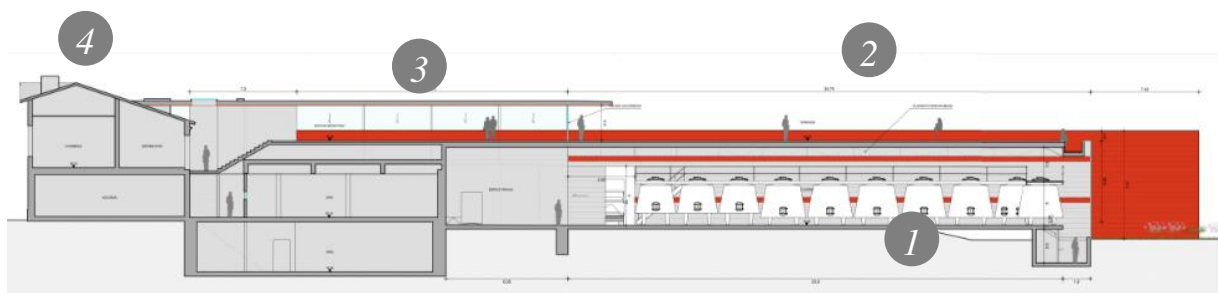
A cutting-edge reception facility showcasing the unique character and position of the estate.

A panoramic view over the surrounding vineyards comprising:

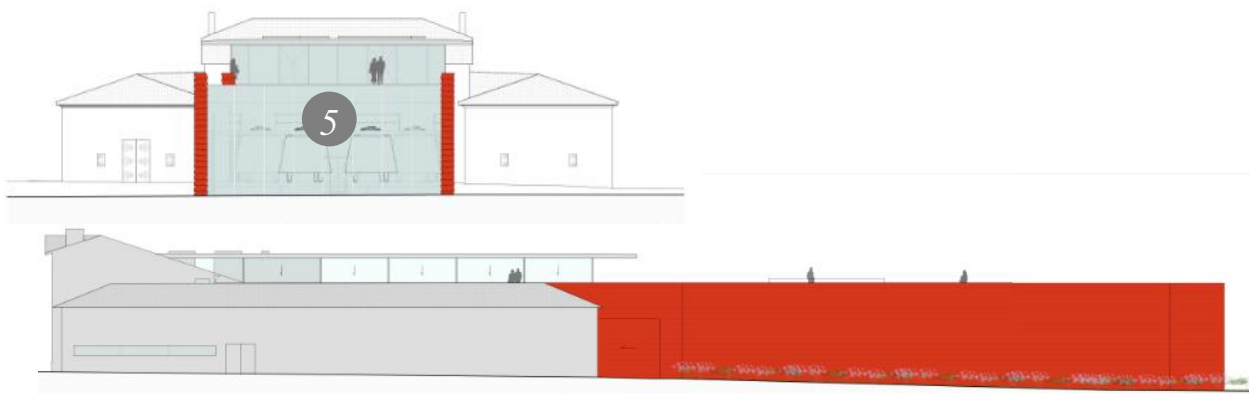
- Tasting room
- 250 m² restaurant
- Stunning 450 m² terrace
- Reception area and 100m² shop



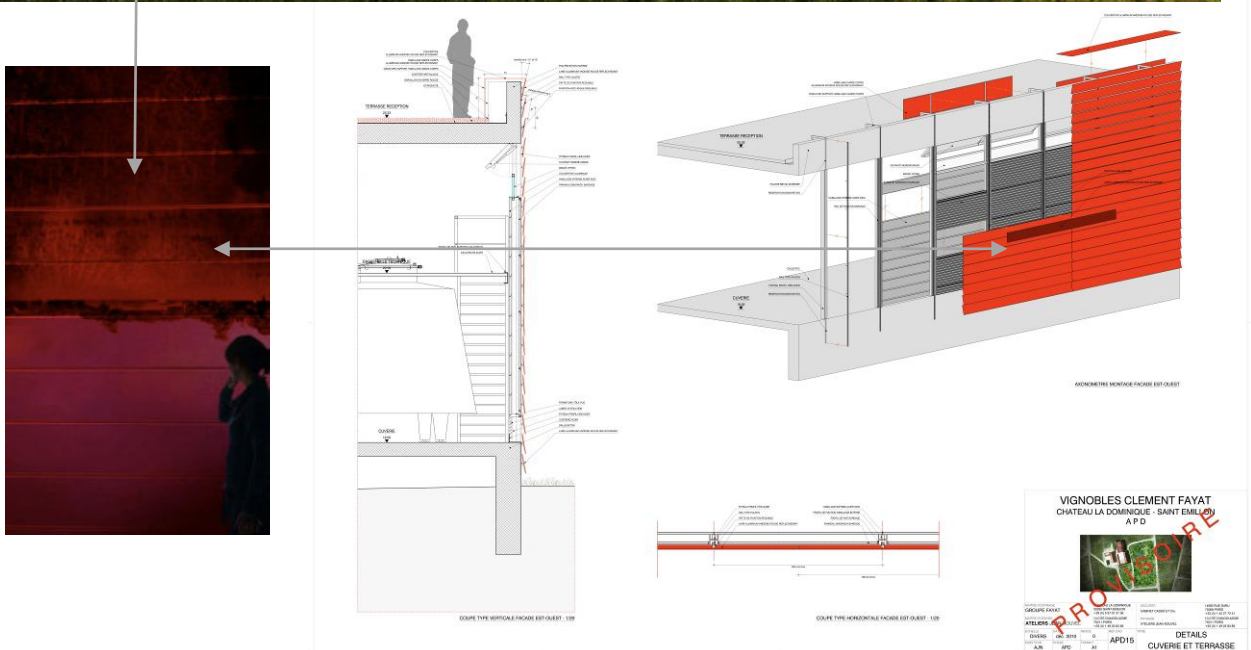
Château La Dominique offers the visitor an unparalleled experience.



1. Extension to the fermenting room
2. Roof terrace with panoramic view (450m²)
3. Tasting room and panoramic restaurant (250m²)
4. Reception rooms
5. Panoramic glass windows overlooking the vines from the fermenting room.



A unique architectural concept designed by Jean Nouvel



Inspired by the reversal mirrors of the great British artist Anish Kapoor, the outside coating of the Chai is built using long slabs of red reflective stainless steel. The 6 tints used are designed to recreate the different shades of red wine seen under light. **Panoramic windows and open spaces create a unique atmosphere which harnesses the culture of the vine, the wine making and the pleasure of tasting.**



The choice of design and architecture convey the uniqueness and beauty of the Château.



“The Chai evokes the depths and the reflections of the great Bordeaux wines, when you look at them in a glass, in the light, this Bordeaux red becomes a mirror.”
Jean Nouvel prix Pritzker 2008

Press contact MCG Communication

Marie-Catherine GAULT

11 rue Fessart

92100 Boulogne

01 41 10 49 49

mdormesson@mcg-communication.fr

Vignobles Clément Fayat contact

Isabelle AUZELY

i.auzely@vignobles.fayat.com

05 57 51 31 36

06 80 40 21 06



Ateliers Jean Nouvel



Château La Dominique – Jean Nouvel Project